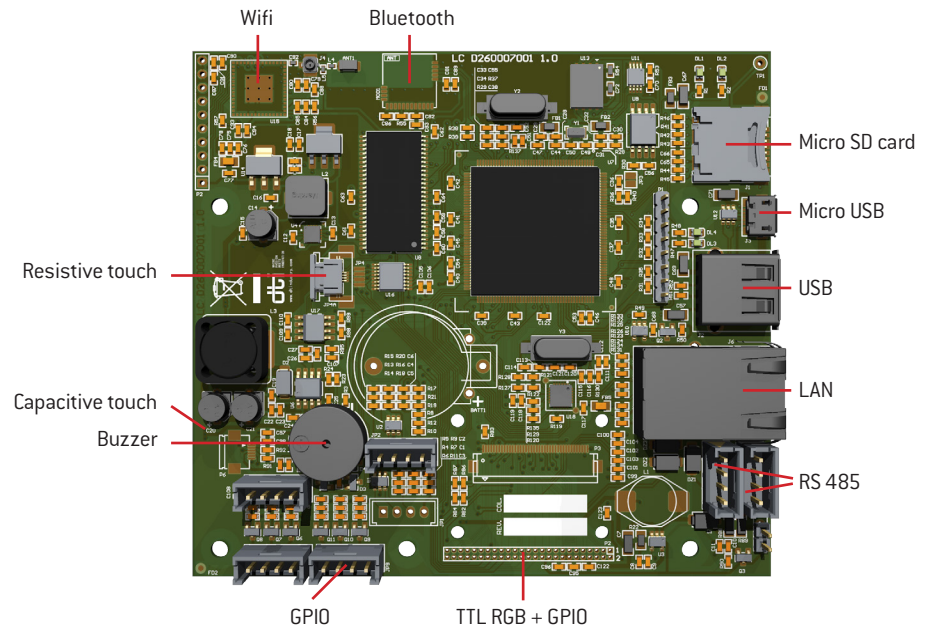


TFT TOUCH SCREEN - DTOUCH

DTouch pcb boards are the new platforms offered by DTI. These products are designed to satisfy all the needs of the customers in terms of user interface and IOT. Our offer includes two main products: Dtouch 1 and Dtouch2.

**D TOUCH1** is a TFT touch screen designed for high performance and to be easily customized. It is available with various TFT's sizes: 3.2", 4.3", 7" and 10.1". The hardware structure is based on a Cortex-M4 or M7 processor core, which is able to handle both the graphics of the screen and the resistive or capacitive touch screen. The board integrates USB and USD expansion card, WI-FI and Bluetooth, communication Modbus RS485, TTL and several customizable I/O.



**D TOUCH2** is an embedded PC panel with integrated Android or Linux. Based on IMX6 cortex A9, with a frequency of 1Ghz, it guarantees high performances in term of speed operations and multimedia handling. It is possible to connect a LCD with a maximum resolution of 1920\*1080 pixels. Bluetooth, WiFi and Ethernet ports are available. Moreover there are many serial communications and customizable I/Os.



### Services provided

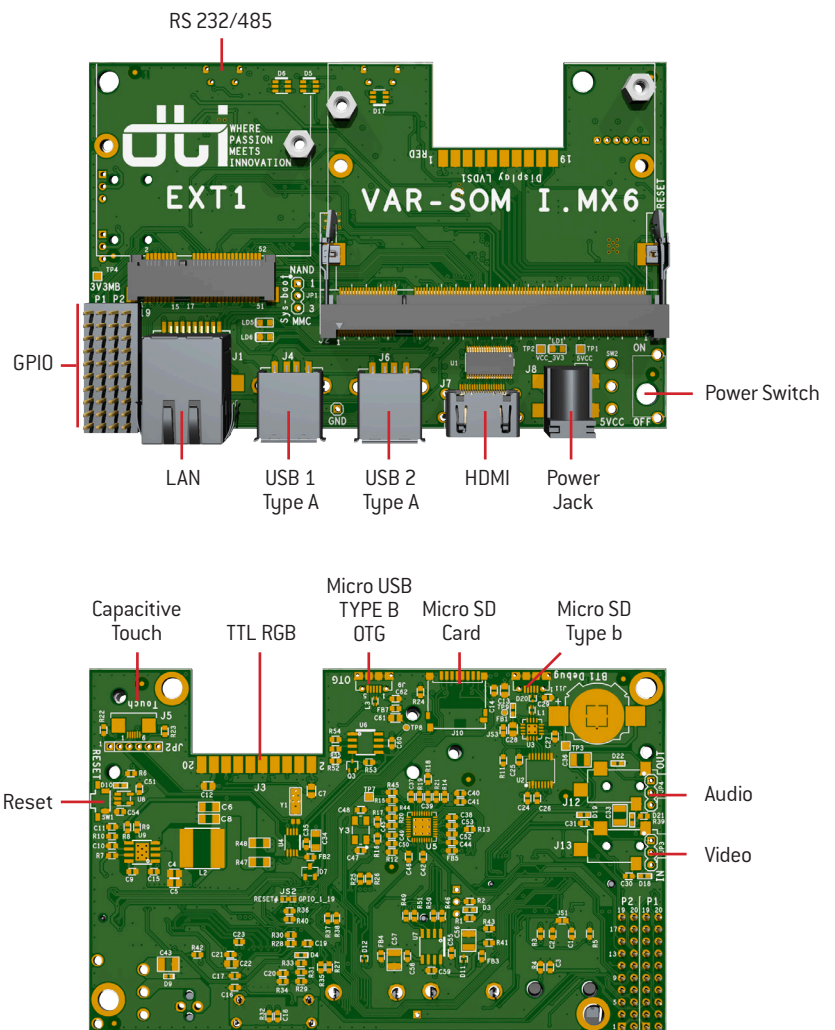
DTI provides the following services for these products:

Graphic development. Three different graphics solutions are presented. This allows the customer to choose the best and more suitable offer for the application. Firmware development. We start from a basic graphic on which we develop the code inside the hardware platform.

Software development. We offer both already-developed software that are easily configurable and also to-be-developed software designed on the customer specs.

Hardware development. If necessary, additional devices can be inserted to adapt the platform to the customer needs. Test and debug. The products are tested both from the functional point of view than at an electrical level.

Standard or custom mechanical supports. DTI offers several solutions for fixing the TFT and the control board. Our expertise is at the client's disposal in order to develop customized solutions.



TECHNICAL FEATURES	DETAILS	DTOUCH 1	DTOUCH 2
■ TFT TOUCH SCREEN - DTOUCH			
Power Supply	12 Vdc ± 10% 50/60 Hz	x	x
Real Time Clock	RTC with CR2032 or BR2032 battery	x	x
Low voltage output	2 RGB Led outputs	x	
	1 audible allarm	x	x
Mircoprocessor	ST ARM CortexM4 or M7 4MB flash	x	
	NXP/Freescale i.MX6 - Cortex™-A9 MPCore™ 1GHz		x
Touch screen	4 wires – analog - resistive	x	x
	capacitive touch supported	x	x
Display Connection	LVDS		x
	TTL RGB	x	x
	HDMI		x
Memory	1x MicroSD card Slot with lock type connector	x	x
	1x USB 2.0 Full Speed HOST - Type A connector	x	x
	1x USB 2.0 Full Speed OTG		x
	SDRAM 64Mbit	X	
	RAM 256 - 4096 MB DDR3		X
Serial interfaces	RS485 bus connection with MODBUS protocol	x	x
	TTL 3V o 5V	x	x
	UART		x5
	I2C bus		x2
	SPI		x2
	SATA II interface, 3.0 Gbps		x
	GPIO	x	x
Networking	Wi-Fi with antenna integrated (optional external antenna)	x	x
	Bluetooth connection 4.0 BLE	x	x
	10/100/1000 Mbps Ethernet	x	x
OS Support	DTI Graphic libraries	x	
	Linux Yocto, Ubuntu		x
	Android		x
Operating Conditions	0 ε +70°C with relative ambient humidity: 30 ... 85 % (no condensing)	x	x
Storage Conditions	- 20 ... + 80 °C, with relative ambient humidity: 30 ... 85 % (no condensing)	x	x

# TFT TOUCH SCREEN - DTOUCH



**DTI Srl**

Via Costantini 4/2  
33019 Tricesimo . Udine  
info@dtindustry.com  
www.dtindustry.com  
+39 0432 855071