

DTOUCH 2



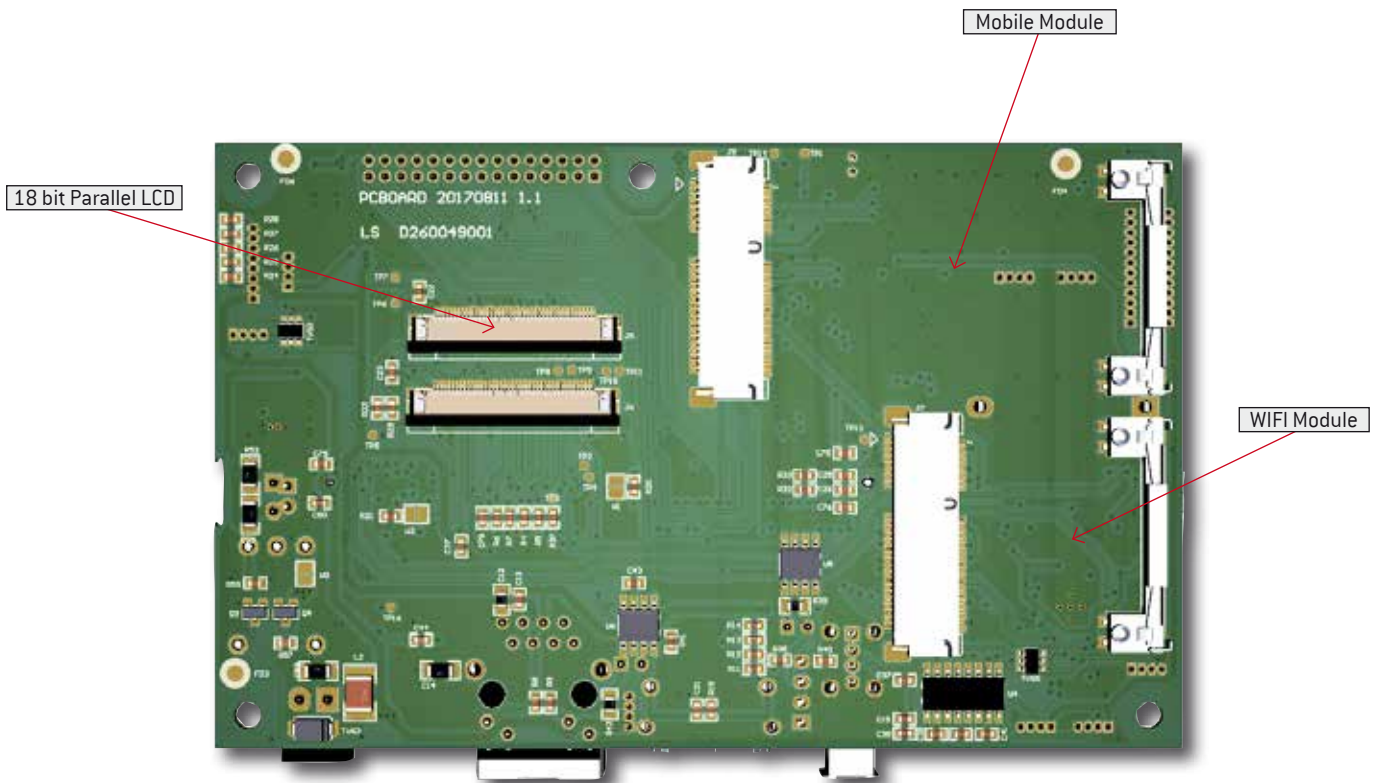
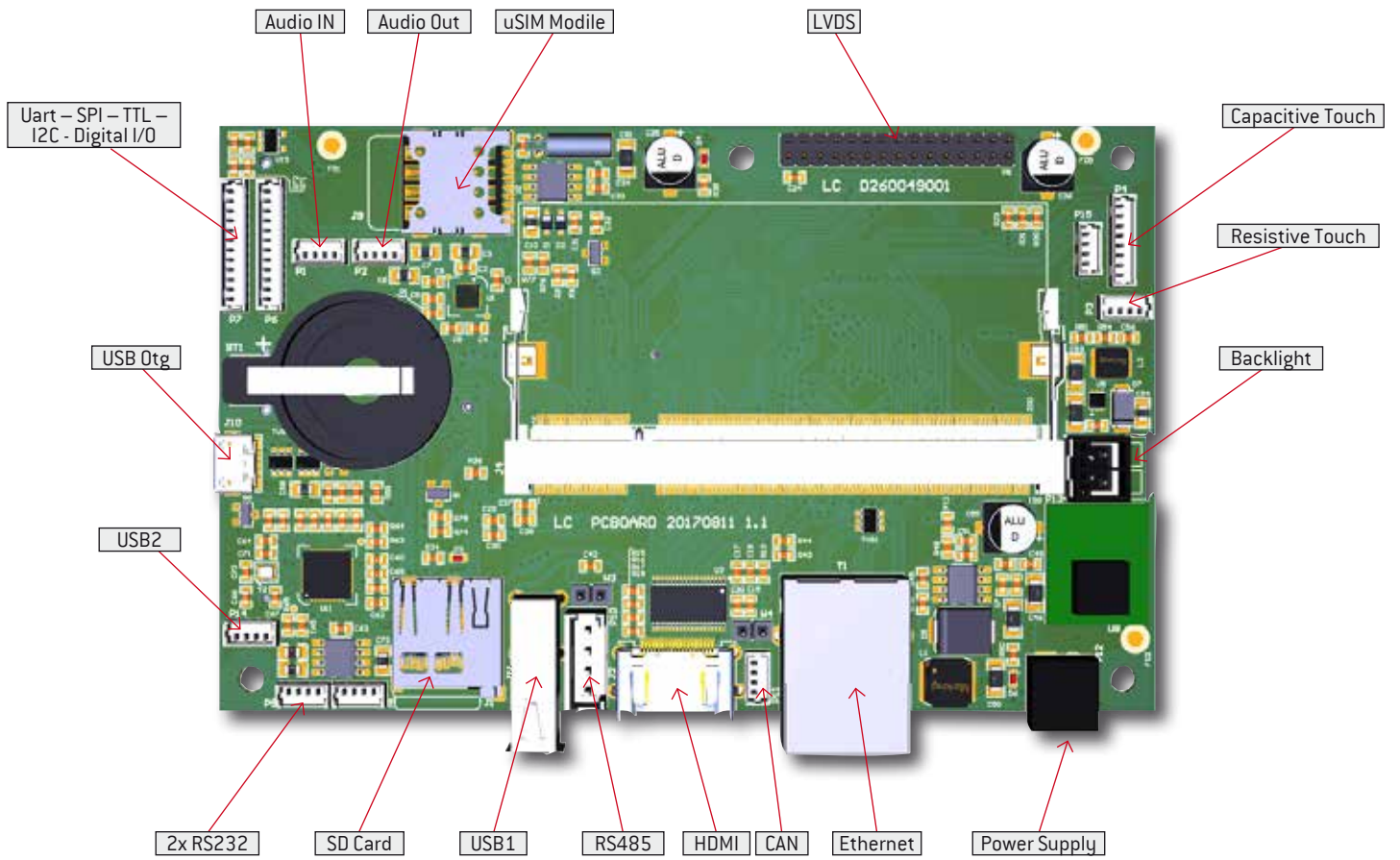
DTOUCH 2

DTOUCH2 is an embedded PC panel with integrated Android or Linux of DTI. Based on IMX6 cortex A9, with a frequency up to 1Ghz, it guarantees high performances in

term of speed operations and multimedia handling. It is possible to connect a LCD with a maximum resolution of 1920*1080 pixels.

Bluetooth, WiFi and Ethernet ports are available. Moreover there are many serial communications and customizable IOs .

VERSIONS DTOUCH2	D1	D2	D3	D4
CPU Type	NXP i.MX6UltraLite	NXP i.MX6Solo	NXP i.MX6DualLite	NXP i.MX6Quad
Core Class	ARM Cortex - A7	ARM Cortex - A9	ARM Cortex - A9	ARM Cortex - A9
Frequency	528 MHz	1 GHz	1 GHz	1 GHz
MEMORY				
Flash	256MB NAND	512MB NAND		
RAM	128 MB 16 bit DDR3	256 MB 32 bit DDR3	512 MB 32 bit DDR3	1 GB 32 bit DDR3
SD-Card Slot	4 bit microSD			
OPERATING SYSTEMS				
OS Support	Linux Yocto	Android, Linux Yocto	Android, Linux Yocto	Android, Linux Yocto
COMMUNICATION INTERFACES				
Digital I/O	10x 3,3 V logic level - 1x Analog Input -			
USB	480 Mbit/s Host (Type A)			
	480 Mbit/s OTG (Type Micro-AB)			
	480 Mbit/s Host (picoblade)			
Serial Communications	1x CAN (ISO/DIS 11898) with integrated driver			
	1x RS-485 1 channel with integrated driver			
	2x RS-232 (RX/TX) with integrated driver			
	1x SPI - 1x I2C - 1xRS232 3,3 V TTL level			
CONNECTIVITY				
Network	1x 10/100 Mbit/s Ethernet			
WiFi	USB WiFi dongle	2.4GHz b/g/n or 2.4GHz+5GHz a/c (miniPCI express half module)		
BLE	USB dongle	Bluetooth connection 4.0 BLE (miniPCI express half module)		
Mobile	2G or LTE or NB1			
LCD Support				
Display communications	1x18 bit Parallel LCD	LVDS single-dual Channel, HDMI and 1x18 bit Parallel LCD		
Lcd sizes	4,3"- 5" - 7" - 10,1"	4,3"- 5" - 7" - 10,1" - 15,6" - 21,5" - 32" / generic HDMI monitor		
Touch	4-wire analog resistive; PCAP I ² C - PCAP USB			
Backlight	integrated up to 10 W - PWM output for Luminous intensity adjustment			
AUDIO AND VIDEO				
Audio Output	Stereo headphone output			
Audio Input	Stereo line in + mono microphone input			
Video	Camera input (CSI)			
DIMENSIONS				
W x H x D	120 mm * 75 mm * 21.4 mm (Board) - 146mm * 82 mm * 24.6 mm (Box)			
Weight	78 g (Board) - 228 g (Box) without mobile and LCD			
POWER SUPPLY				
Supply	Nom. 9 to 26 V DC (with mobile max 18V)			
Consumption	Down to 2.5W without mobile and LCD			
TYPICAL ENVIRONMENTAL CONDITIONS				
Storage Temp.	- 20 ... + 80 °C, with relative ambient humidity: 30 ... 85 % (no condensing)			
Operating Temp.	0 °C +60°C with relative ambient humidity: 30 ... 85 % (no condensing) / extended range on request			



DIMENSIONS

